

Collection trough systems

Shelving systems for hazardous substances

Safety cabinets

Open-air storage systems / projects

Fire protection container systems

Gas cylinder storage systems

Safety containers, handling systems, ...

## PP BARREL PUMPS

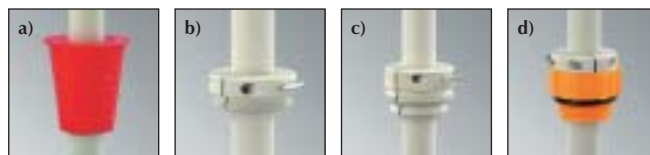
### For transferring acids, alkalis and detergents

- ✎ Rigid discharge tube or flexible discharge tubing with stopcock
- ✎ Capacity / stroke: 230 ml / 300 ml



Model	Immersion depth mm	Article No.
Barrel pump with discharge tube	650	B69-6710-A
Barrel pump with discharge tube	1000	B69-6711-A
Barrel pump with discharge tubing and stopcock	650	B69-6712-A
Barrel pump with discharge tubing and stopcock	1000	B69-6713-A

Accessories for PP and PTFE pumps	Article No.
a) PVC barrel stopper for container openings 40-70 mm dia.	B69-6714-A
b) Barrel screw joint for R2", inner fine thread	B69-6715-A
c) Barrel screw joint for Mauser 2", inner coarse thread	B69-6716-A
d) Barrel screw joint for Tri-Sure, inner coarse thread	B69-6717-A



## FILLING-OFF PUMPS



### 3 versions:

- ✎ Polypropylene for weak acids, caustic solutions and detergents
- ✎ PVDF acids and caustic solutions
- ✎ Stainless steel for solvents and liquids of VbF Hazard Class AIII (not easily flammable)

### Details:

- ✎ Continuous liquid flow
- ✎ Hand pump ideal for containers up to 60 L capacity
- ✎ Foot pump ideal for containers up to 120 L capacity
- ✎ Suction tube automatically adapts to particular barrel height
- ✎ For all commercially available containers with openings 30 - 70 mm dia.
- ✎ Capacity 20-30 L/min

Model	Immersion depth mm	Article No.
Hand pump PP	700	B69-6720-A
Hand pump PVDF	700	B69-6721-A
Hand pump stainless steel	900	B69-6722-A

Model	Immersion depth mm	Article No.
Foot pump PP	900	B69-6725-A
Foot pump PVDF	700	B69-6726-A
Foot pump stainless steel	900	B69-6727-A

## PUMP-IT

### Canister pump for acids, bases and petrochemical liquids

- ✎ For emptying canisters, carboys and barrels by excess air pressure
- ✎ Made of PP and Viton
- ✎ Connection thread 64 mm dia. (BSI)



Pump-it,  
Article No. B69-6730-A

Accessory: Adapter Set for all the usual container sizes,  
Article No. B69-6731-A

## PTFE BARREL PUMPS

### For transferring high-purity and aggressive liquids

- ✎ Made from pure, solid, white PTFE (not suitable for elemental fluorine)
- ✎ Stopcock prevents drips and escape of vapour



Article No.  
B69-6732-A

Accessories: see  
PP barrel pumps

## AKKUPUMP

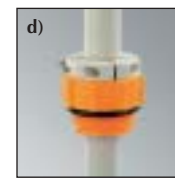
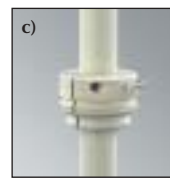
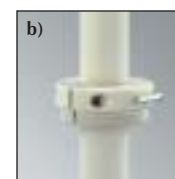
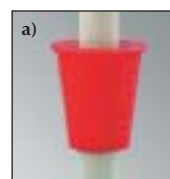
**For a wide range of liquids, even aggressive ones. Not suitable, however, for highly flammable liquids. Simple operation by thumbwheel, stepless adjustment, without cable.**

- ✎ Pump mechanism: polypropylene and acid-resistant stainless steel
- ✎ Rigid PP discharge tube or flexible PVC discharge tubing (1.2 m long) with stopcock
- ✎ Complete with 9.6 V rechargeable battery and charger for 230 V
- ✎ For viscous media up to 200 mPas
- ✎ Immersion tube 25 mm dia.
- ✎ Capacity up to 260 L / h
- ✎ Max. delivery height 6.5 m
- ✎ Weight 990 g



Model	Immersion depth mm	Article No.
AkkuPump with discharge tube	500	B69-6690-A
AkkuPump with discharge tube	700	B69-6691-A
AkkuPump with discharge tube	1000	B69-6692-A
AkkuPump with discharge tubing and stopcock	500	B69-6693-A
AkkuPump with discharge tubing and stopcock	700	B69-6694-A
AkkuPump with discharge tubing and stopcock	1000	B69-6695-A

Accessories	Article No.
a) PVC barrel stopper for container openings 40-70 mm dia.	B69-6684-A
b) Barrel screw joint for R2", inner fine thread	B69-6685-A
c) Barrel screw joint for Mauser 2", inner coarse thread	B69-6686-A
d) Barrel screw joint for Tri-Sure, inner coarse thread	B69-6687-A

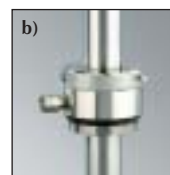
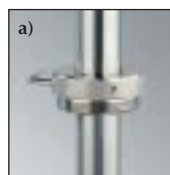


## STAINLESS STEEL BARREL PUMPS



**For transferring flammable liquids**

- ✎ Electrically conductive
- ✎ With discharge tube or discharge tubing, electrically conductive
- ✎ Capacity / stroke 220 ml / 350 ml / 560 ml
- ✎ Medium-contacting parts made of stainless steel 1.4301 and PTFE



Model	Immersion depth mm	Article No.
Barrel pump with discharge tube	360	B69-6700-A
Barrel pump with discharge tube	570	B69-6701-A
Barrel pump with discharge tube	910	B69-6702-A
Barrel pump with discharge tubing and stopcock	360	B69-6703-A
Barrel pump with discharge tubing and stopcock	570	B69-6704-A
Barrel pump with discharge tubing and stopcock	910	B69-6705-A

Accessories	Article No.
a) Brass screw joint, nickel-plated for flammable liquids, R2" inner steel fine thread	B69-6706-A
b) Gastight screw joint, R2" steel barrel thread, non-return valve with 1/8" connection, nickel-plated brass, with Viton seal	B69-6707-A
c) Antistatic Set for eliminating static electricity	B69-6708-A

Collection trough systems

Shelving systems for hazardous substances

Safety cabinets

Open-air storage systems / projects

Fire protection container systems

Gas cylinder storage systems

Safety containers, handling systems, ...